

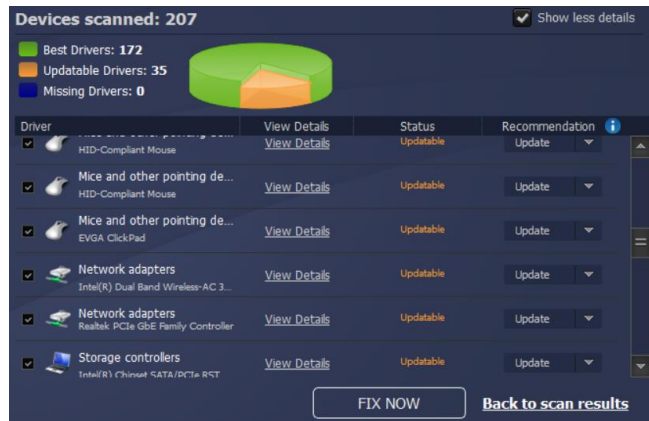
Advanced System Repair Pro

Audio Driver Detection and Update



Overview

Physical devices such as video, network, and sound cards all require constant maintenance and updating of drivers. All too often, when a user encounters one of a variety of issues they are told to “ensure that drivers are up to date”.

When this is done automatically, as part of Windows Update or through 1st party management tools, this can be trouble free. However, when users begin manually removing, installing, and updating drivers, errors can begin to occur. At it’s worst, such faults may manifest themselves as system crashes as instability but may also result in non-fatal errors.



Testing

Platforms	
 Windows 10 Intel i7 16GB Memory 1TB Storage	 Windows 8 Intel i5 12GB Memory 1TB Storage

As part of a use case test, Checkmark Certified examined the problems that can occur when users self-manage drivers specifically related to audio devices. This was done by mimicking the most common faults made by the user including, installation of outdated drivers, missing driver files, and incorrect driver versions.

While the intention was to replicate faults that would prevent audio playback, some scenarios only resulted in decreased audio quality or performance. In either case, ASRPro was used to scan the system and to correct any driver faults found.

Test Outcome

For the various audio devices tested, ASR was successful in detecting and remediating each fault type. Each time, the solution was able to identify the currently installed driver and provide details on the version to be installed.

<i>Driver Type</i>	<i>Detected</i>		<i>Updated</i>	
	<i>Win10</i>	<i>Win8</i>	<i>Win10</i>	<i>Win8</i>
<i>Missing Driver</i>	✓	✓	✓	✓
<i>Outdated Driver</i>	✓	✓	✓	✓
<i>Incorrect Version</i>	✓	✓	✓	✓

Details	Current Driver	Best Driver
Version	6.0.1.8142	6.0.8683.1
Date	2017-05-02T00:00:00Z	2019-04-16T00:00:00Z
Publisher	Realtek	Realtek Semiconductor Corp.

Advanced System Repair Pro – Product Overview

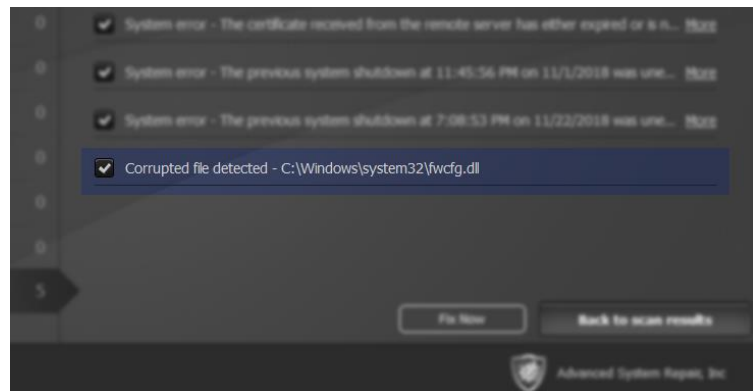
While some system clean-up utilities may focus on a given area, such as driver updates, system registry, or disk fragmentation, ASR provides a complete system repair capability; including a malware detection and removal engine that has, separately to this test, been awarded Checkmark Certification in its own right.



Running of the scan is comparatively fast, especially considering the breadth of areas covered, and results are displayed to the user in a clear and concise manner.

The UI is well designed and permits a good degree of user control and configuration, without becoming a maze of individual option screens and settings.

Aside from making noticeable improvements to the system responsiveness and general performance, ASR also introduced a minimal resource footprint of its own. In contrast to products that clean systems while proving a drain on performance themselves.



Summary

ASR is a complete solution that protects the end user while improving system stability and performance.

Disclaimer

Checkmark Certified is dedicated to ensuring the highest standard of security product testing in the industry, it is never possible within the scope of any given test to completely and exhaustively validate every variation of the security capabilities and/or functionality of any particular product tested and/or guarantee that any particular product tested is fit for any given purpose. Therefore, the test results published within any given report should not be taken and accepted in isolation.

Potential customers interested in deploying any particular product tested by Checkmark Certified should seek further confirmation that the said product will meet their individual requirements, technical infrastructure and specific security considerations. All test results represent a snapshot of security capability at one point in time and are not a guarantee of future product effectiveness and security capability.

Checkmark Certified provide test results for any particular product tested, most relevant at the time of testing and within the specified scope of testing and relative to the specific test hardware, software, equipment, infrastructure, configurations and tools used during the specific test process.