

Advanced System Repair Pro

System Runtime Errors

Overview



Each application found on your computer can be subject to any one of a number of errors, each of which can typically be classified into one of a variety of categories. Syntax and compiler errors are encountered during development, while runtime errors are encountered on execution. This last category is the type most likely to effect the end user and can typically be mitigated to some extent by the user themselves.

The exact causes of runtime errors can be as varied as the applications themselves, but typically come down to faults in the execution environment.

Testing

Platforms

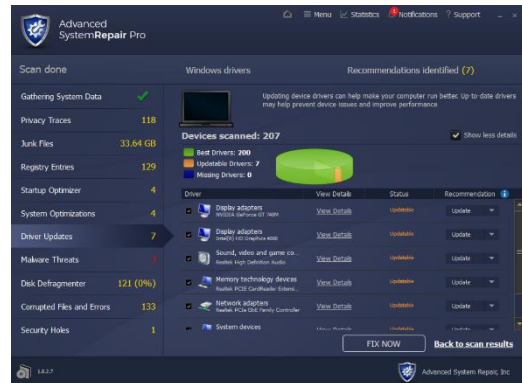


Intel i7
16GB Memory
1TB Storage

To verify Advanced System Repair Pro's ability to resolve runtime errors, testing looked at several different areas, including registry entry corruption, missing or corrupted system files, driver errors or outdated versions,

memory and disk space limitation.

In each case, Checkmark Certified introduced controlled faults before scanning the system using one or more of ASRPro's utilities. Results of the scans were compared against these known faults before any remediation actions were taken. Applications were once more executed to determine if runtime errors were still encountered.



How Does ASR Work?

Advanced System Repair Pro contains an array of utilities, the combination of which is designed to provide universal system performance and maintenance checking and remediation.

The utilities can be used in isolation, for targeted scanning of known, or suspected, issues. While each can be selected or unselected to provide combinations of scans.

Results are broken down by scanning utility with each providing a further itemised list of individual issues found.

Test Outcome

In each of the examined areas, Advanced System Repair Pro correctly identified and mitigated the examples used in testing. Moreover, details and explanations of the results were accurate and would provide the user a useful overview of the respective items.

	Platform: <i>Windows 10</i>		
	Detected	Repaired	Verified
<i>Registry Errors</i>	✓	✓	✓
<i>System File Corruption</i>	✓	✓	✓
<i>Driver Faults</i>	✓	✓	✓
<i>Disk Space Capacity</i>	✓	✓	✓

Advanced System Repair Pro – Product Overview

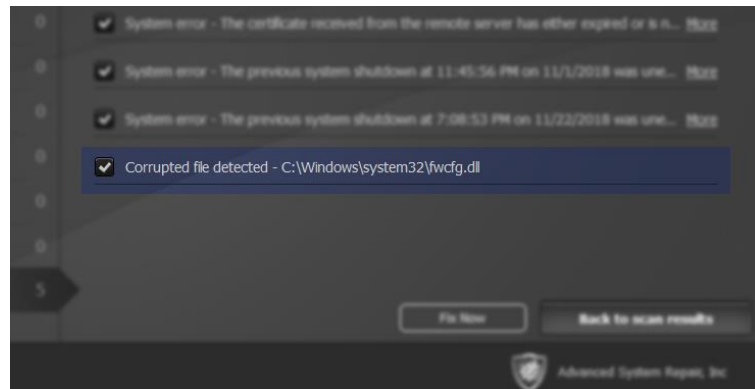
While some system clean-up utilities may focus on a given area, such as driver updates, system registry, or disk fragmentation, ASR provides a complete system repair capability; including a malware detection and removal engine that has, separately to this test, been awarded Checkmark Certification in its own right.



Running of the scan is comparatively fast, especially considering the breadth of areas covered, and results are displayed to the user in a clear and concise manner.

The UI is well designed and permits a good degree of user control and configuration, without becoming a maze of individual option screens and settings.

Aside from making noticeable improvements to the system responsiveness and general performance, ASR also introduced a minimal resource footprint of its own. In contrast to products that clean systems while proving a drain on performance themselves.



Summary

ASR is a complete solution that protects the end user while improving system stability and performance.

Disclaimer

Checkmark Certified is dedicated to ensuring the highest standard of security product testing in the industry, it is never possible within the scope of any given test to completely and exhaustively validate every variation of the security capabilities and/or functionality of any particular product tested and/or guarantee that any particular product tested is fit for any given purpose. Therefore, the test results published within any given report should not be taken and accepted in isolation.

Potential customers interested in deploying any particular product tested by Checkmark Certified should seek further confirmation that the said product will meet their individual requirements, technical infrastructure and specific security considerations. All test results represent a snapshot of security capability at one point in time and are not a guarantee of future product effectiveness and security capability.

Checkmark Certified provide test results for any particular product tested, most relevant at the time of testing and within the specified scope of testing and relative to the specific test hardware, software, equipment, infrastructure, configurations and tools used during the specific test process.